

PROMOZEN™

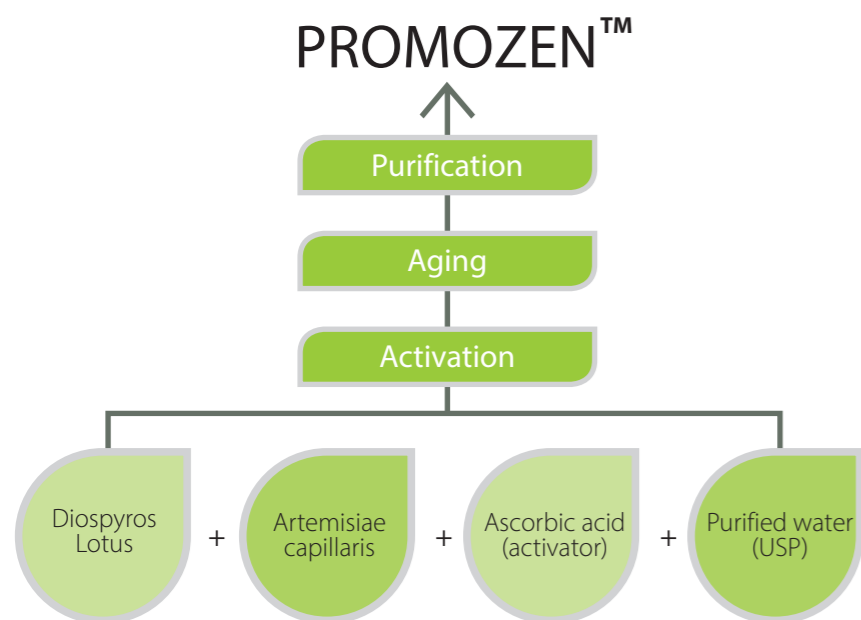
GI Health Enhancer



- Activated Natural Organic Acids
- Bio-Natural Solution for Stress Factors
- GI-Acidification
- Immune-Potentialiation

• **PROMOZEN** is a gastrointestinal tract (GIT) health enhancer for poultry & swine based on activated natural organic acids and trace minerals extracted from oriental plants.

► What is PROMOZEN?



Diospyros Lotus
 - Promotes gastric and intestinal juice secretion
 - Stimulates digestion
 - Promotes intestinal villi growth
 - Promotes appetite
 - Anti-bacteria and anti-viral action

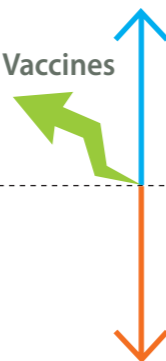


Artemisia Capillaris
 - Promotes bile production and secretion
 - Improves liver and kidney function
 - Stimulates immune reaction
 - Anti-bacterial and anti-viral action
 - Anti-inflammatory action

► Benefits of PROMOZEN-L

- Healthy GIT
- Healthy Organ
- Detoxification
- Good digestibility

Synergistic Effect with Antibiotics & Vaccines



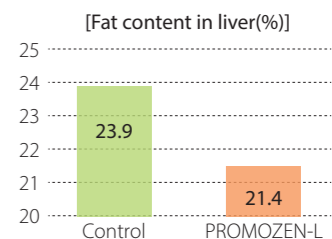
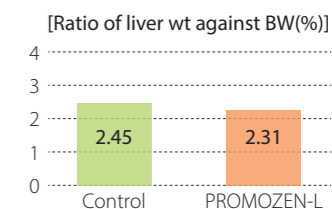
- ↑ Egg production
- ↑ Egg & meat quality
- ↑ Daily weight gain
- ↑ Viability
- ↓ Stress
- ↓ Disease Outbreak
- ↓ Mortality
- ↓ Medication & Feed cost

► Filed trial test

< Detoxification : Prevent Effect on Fatty Liver in Layer >

Group	Control	PROMOZEN
No. of hen	12,400	12,600
No. of tested*	10	10
Avg. body weight (A)	2,484g	2,439g
Avg. liver weight (B)	60.9g	56.3g
B/A	2.45%	2.31%
Fat content in liver	23.9%	21.4%

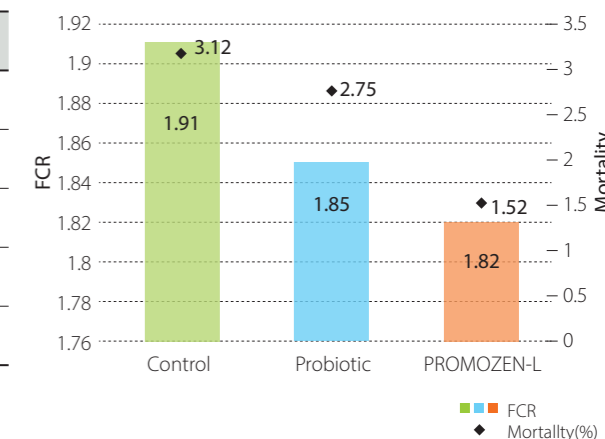
Control : Basal diet
 PROMOZEN-L : Basal diet + 100ml of PROMOZEN-L daily per 1,000 hens for 16 weeks, from 50th to 65th week of age
 * Slaughtered at 65th week of age



<Productivity Improvement in Broiler >

Group	Control	Probiotic	PROMOZEN
No. of bird	11,400	10,500	11,200
Final weight (35days)	1,604g	1,695g	1,749g
Feed intake / bird	3,061g	3,137g	3,183g
FCR	1.91	1.85	1.82
Mortality	3.12%	2.75%	1.52%

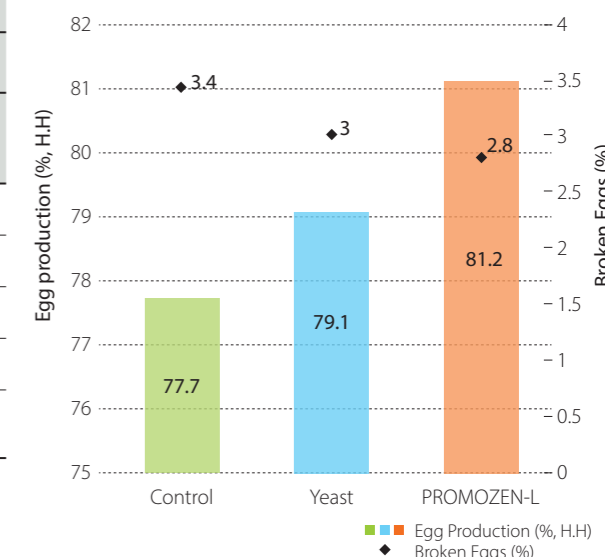
Control : Basal diet
 Probiotics : Basal diet + 1Kg of probiotic per ton of feed
 PROMOZEN-L : Basal diet + 10ml/1,000 birds from day 0 to 14, 30ml/1,000 birds from day 15 to 28, 50ml/1,000 birds from day 29 to 35



<Productivity Improvement in Layer >

Group	Control		Yeast		PROMOZEN	
No. of layer	11,540		12,370		11,860	
	Egg Production	Broken Eggs	Egg Production	Broken Eggs	Egg Production	Broken Eggs
30~39 weeks	89.0%	2.0%	89.5%	2.1%	91.4%	1.9%
40~49 weeks	82.8%	3.2%	83.5%	2.9%	84.7%	2.8%
50~59 weeks	73.7%	3.9%	75.3%	3.3%	78.4%	3.1%
60~69 weeks	65.2%	4.5%	68.2%	3.8%	70.1%	3.5%
Avg.(30~69 weeks)	77.7%	3.4%	79.1%	3.0%	81.2%	2.8%

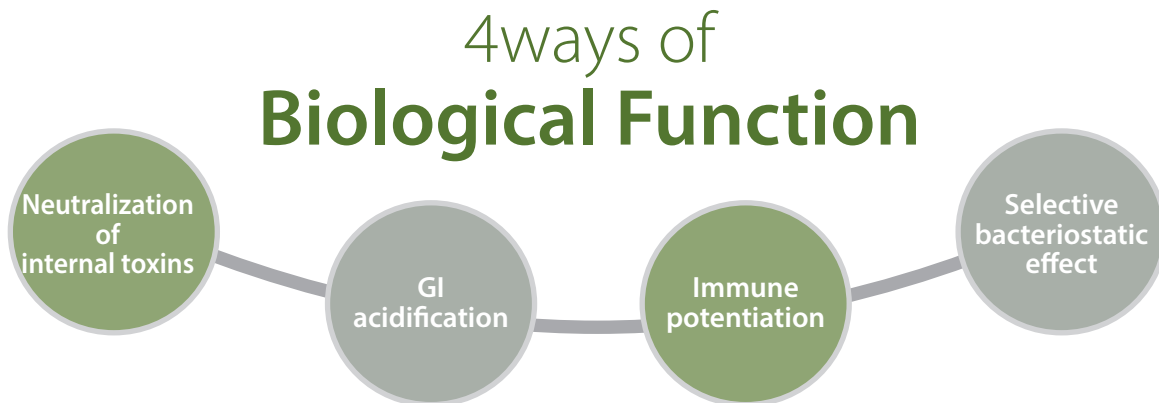
Control : Basal diet
 Yeast : Basal diet + 2Kg of yeast culture per ton of feed
 PROMOZEN-L : Basal diet + 200ml of PROMOZEN-L daily per 1,000 hens



▶ Dosage

Water - Soluble type	0.5~1L/ton of drinking water
Powder type	1~2kg/ton of feed

▶ Biological Function of PROMOZEN-L



▶ Application of PROMOZEN-L

